

MRI systems designed to improve the patient experience.

The Atlas SPEEDER head coil is designed to improve the MRI experience for patients that may be claustrophobic. Our MRI systems also offer many other features to increase patient comfort and operational workflow without compromising image quality.



Vantage

Atlas SPEEDER head coil is available on the Vantage Atlas® and Vantage Titan™ MRI systems.

PIANISSIMO™ NOISE REDUCTION TECHNOLOGY

Utilizes a combination of techniques to reduce noise levels up to 90% and increase patient comfort during scanning procedures.

ULTRA-SHORT OPEN BORE

The Vantage Titan's 71 cm bore provides more room for patients, is less restricting and more tolerable for larger size patients.

FOURTH GENERATION NON-CONTRAST IMAGING

A safe alternative for performing high resolution MRA without the use of contrast agents, delivering images that are often better than those made with conventional contrast imaging.



Comprehensive design with patients in mind.



One more option to image claustrophobic patients.



The Atlas SPEEDER™ head coil base is designed to accommodate even the most claustrophobic patients. By scanning with the anterior attachment removed, you can provide increased comfort with a more open view, without having to compromise imaging capabilities.

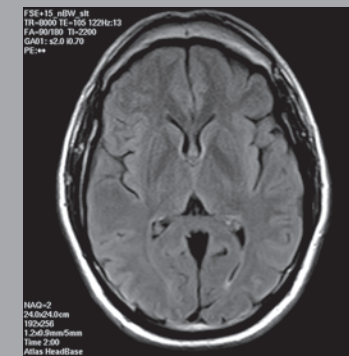
ATLAS COIL TECHNOLOGY IMPROVES WORKFLOW

- Workflow is improved as a result of faster exams due to parallel imaging using Atlas SPEEDER technology
- Patient throughput is enhanced by giving you better success at completing exams with claustrophobic patients
- Revenue is protected by reducing the number of exams refused due to claustrophobia and by reducing the possible need for sedation

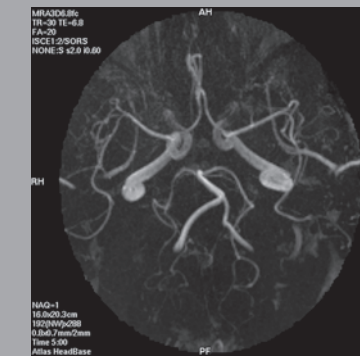


Like the complete line of SPEEDER coils, the Atlas SPEEDER head coil is lightweight and designed to yield a high signal-to-noise ratio. Even with the anterior attachment removed, the image quality is excellent giving your claustrophobic patients another option to complete their exams.

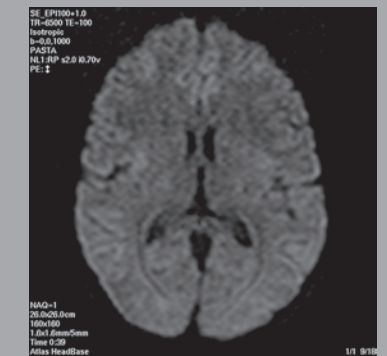
Excellent resolution and image quality in all of your clinical images with the anterior attachment removed.



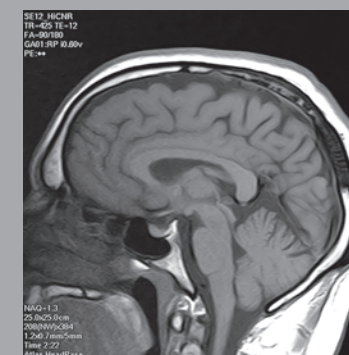
FLAIR in 2 minutes with SPEEDER factor of 2



MultiSlab 3D TOF with SPEEDER factor of 2



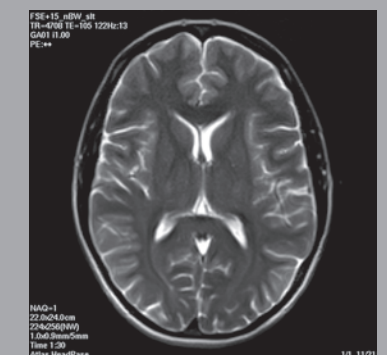
EPI DWI in under 1 minute with SPEEDER factor of 2



Sagittal T1 brain



Orbits and optical nerves



Axial T2 in under 2 minutes